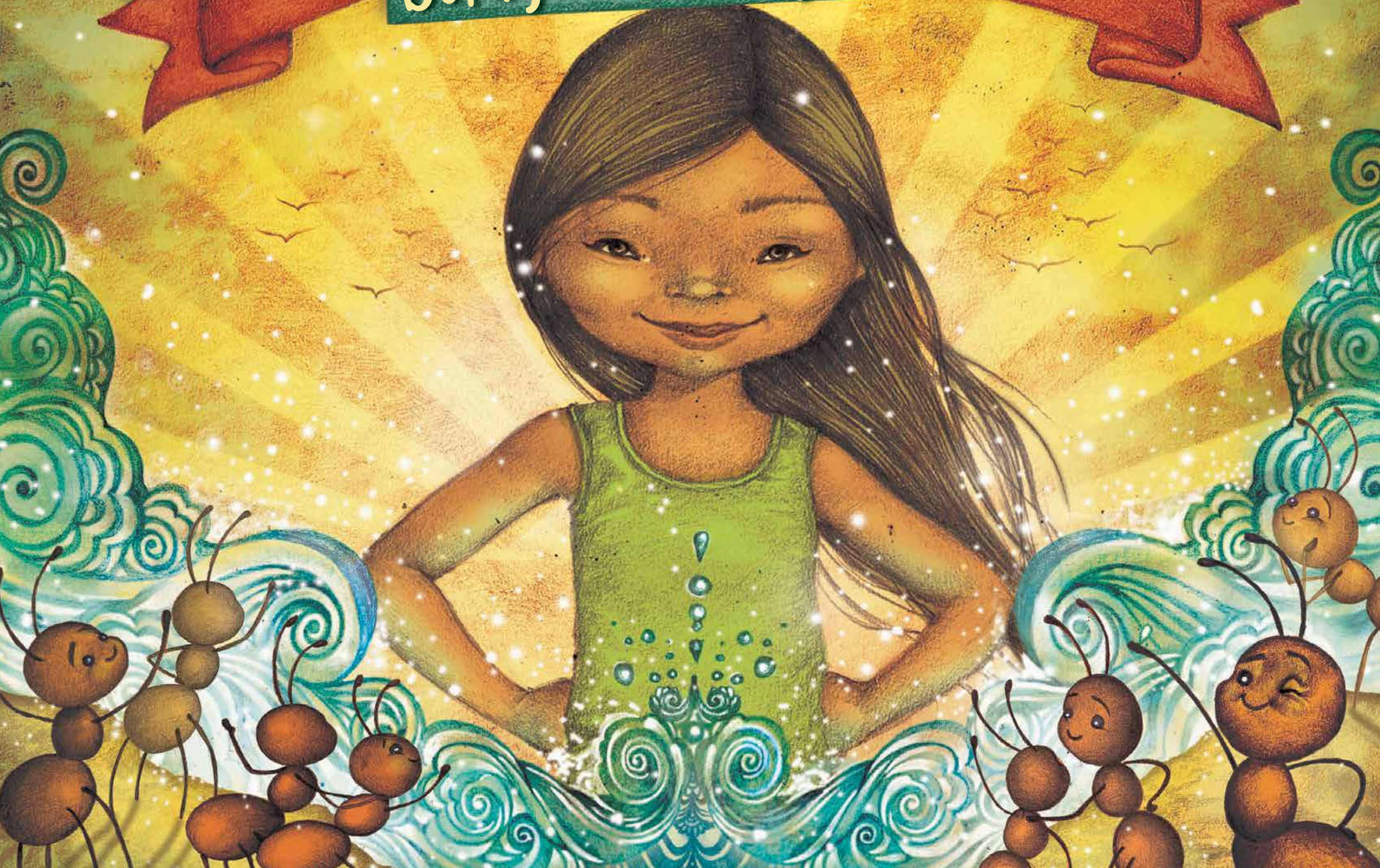


Elena Iglimar ebo: buragwa bendaggega







© Omegan Galu Bulaled Buggwad na sordagan danar sedimalad FONAMUPP 2020

ISBN: 978-9962-5546-1-5

Narmasad: Lil hArriera

Sobsad: Martanoemí Noriega

Ilemagsad: Lorena Carrasco

Onolesad: Gwiblo nii

Gwiblo nii, birga duladdar ila dulagwen: Julio Teobaldo Hernández y Adalberto Hernández

Nabswilimagsad: Zózimo Arias y Adalberto Hernández

Idu owisoleged: Igar walagan dule sabga sobed na maidbali geb eba igar dogarbalid, soglege isesagla yogasagwar we sabga onoged, egi sunmagged, dalaba dagged imagged, gwable isseardibe we sabga onolesad, garmar ilemaggar niggadbar, gege dar gue owisossuli, omegan galu bulaled e sanar sordagan sedimalad wissuli.

We sabga egi arbalesadgi, **bendagsa Canadá** e neggwebur geb **ParlAmericas**.

Nueggi bendasmalad

Bergwabba burwigana, masmala,
bunarmar arbasmalad binsaed ugsamalad, Sobsamalad,
e gabdamalag nueggi we igar sabga issegwad:

Amanda Sofia

Blasco Andrés

Alejandro

Claudia Sofia

Guadalupe

Isabella

Judy

Justin

Rodrigo

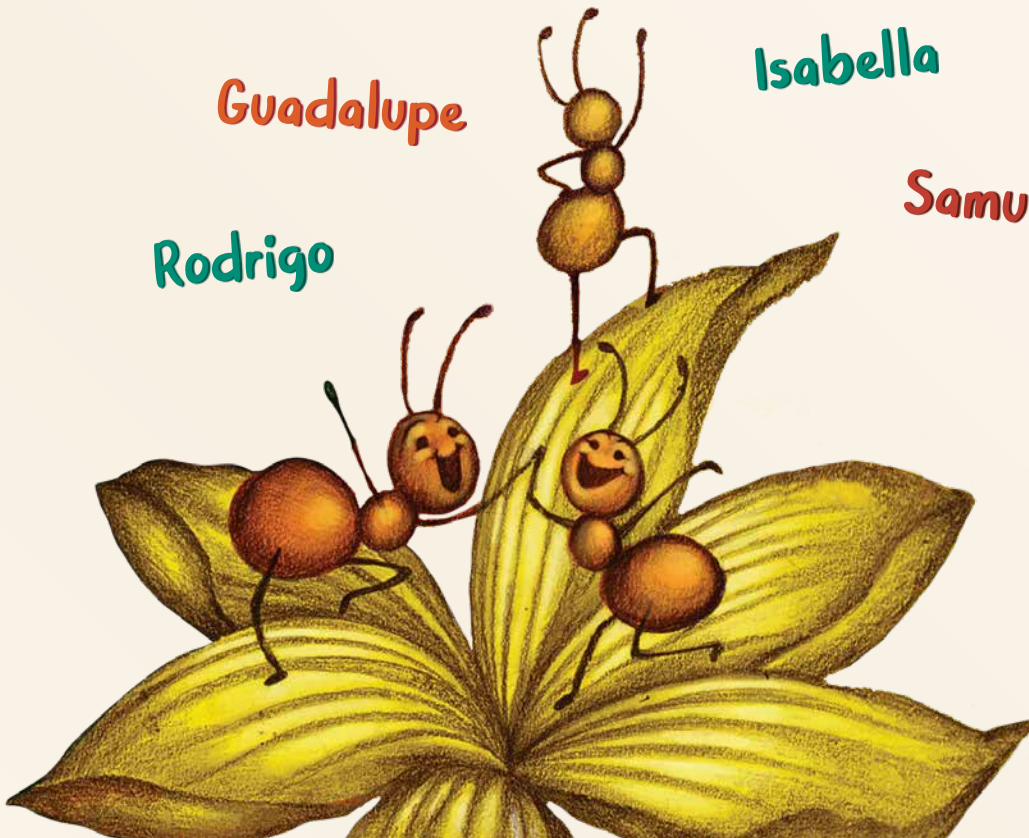
Samuel

Saolys

Valery

Sonia

¡DOGGUS
NUED!





Omegan Galu Bulaled
Buggwad
na sordagan danar
sedimalad

Elena Iglimar ebo: buragwa bendaggega





Elena ibya bibbi nigga, gaddi addage.

Niba addagde, urba addagdebali, aagine daggali sese.
Ged Daggarbali amma Noomar. Assabbin dagge, Sorba
addagbali, Dulemar Dagbali, sabbimar, degi iddode,
diwar namagge Wichiwichicha. Iglimar bur gaddi
dagge igi arbamala, sunmagma, igi na bendagma.
Degi Elena agala madu ossi seddae, geb bendagdae
mele egi annalegega.

Emisgwa sale, Elena egwenadmarbo Neg ogwasa,
Comarca Ngäbe Bugle gimaid, emisgindi Digir
negweburse. Gadi Bingeue, degi amba aimar sadde.
Emisgwagwadse e aimar, sigwi mar Sabbimar, ar
iglimar de. E bab e nana gadi arbamala edina
E muu walig gudidae, ega gadi gusgu soggar dae

**-We sabbur dummad naidi, mimmigan
odurgadaged yobi. Be dina nvedi; gadi
be inmar dagge, an yobi**



Ar nabiri, weob dae Elena

Ibagwengi, seddobbali neg yeerdaglenaidgi, edina iglimar edina

Iglimar Diwar gagaba amididaed. Burwa namagge duddumar

dodoemala, gwilimardi sunmagma. Uggiale godde **¡ PRACATAPACATAPUM!**

Elena, gwaggide ar eguggin sun mosaled e uadugse,

ar yoggor dina sun mosaled e agguse ar egwagedina

guggudeobi gammuse.

**¡ PRACATA
PACATA
PUM!**

¿Ar ibu oimagsa? Mala! Irba mala gossa! Ar

Negobandur so? Anmano dina aggu iddoge, unnila

gaya maa sigisa. Siguimardina uggiar guggudmala

guggualed nii se nadeyob. ¿Nonimarbaloe anmar

negse, ar Saturno se moedsegoe dibe? Iglimardina

siggirmainanaidbi, degi boogidig ambaggusmala.

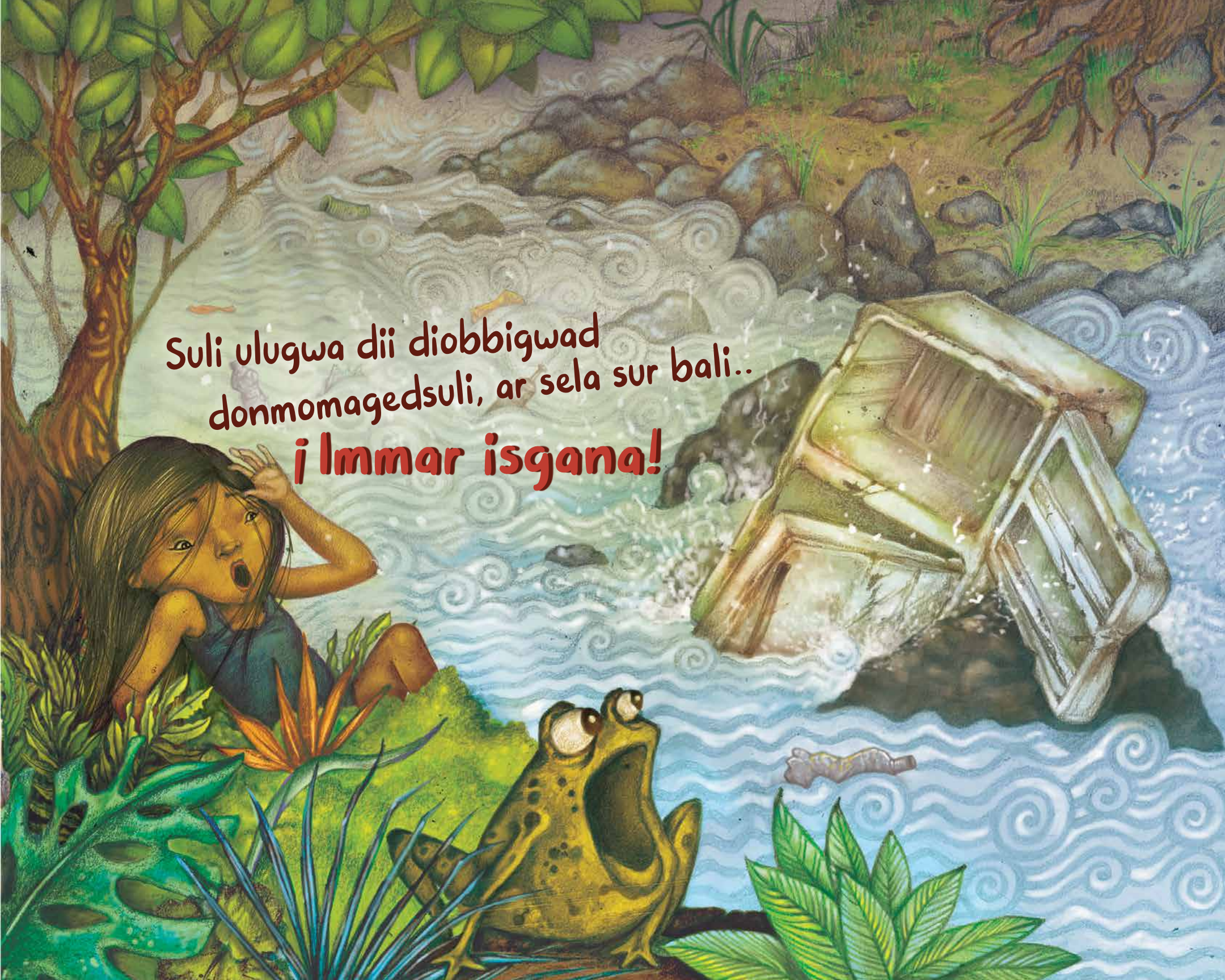
Mala suli, irba suli. Ar negobamdur surbali.

Ar yeer neg oimasa. **we ulugwa dii diobbigwad sobedi!**

Dii mardina ulude, sugga sugga magdelaba diwar di,

agwamardina na ebo yoled nanae, asega obelosa.



A vibrant, painterly illustration of a scene in a stream. In the foreground, a young girl with long brown hair, wearing a blue tank top and brown shorts, sits on a grassy bank with a shocked expression, her mouth wide open and hands raised. Next to her, a large green frog with dark spots also has its mouth wide open in a call. In the background, a wooden boat is partially submerged and tilted in the water, with a small purple worm-like creature floating nearby. The water is depicted with swirling, circular patterns, suggesting a strong current or rain. The surrounding environment includes a large tree on the left, various green plants, and a rocky bank on the right.

Suli ulugwa dii diobbigwad
donmomagedsuli, ar sela sur bali..
i Immar isgana!

Dulemar buggidar, binsamala diwar immar obinnied surgud dabali
We immar durgan isggana gege burbaga gue, weggi ambagud dae, inanusga gue
Ammar dii nued abege nuegwa guddi guega. Siggwimar, sabbimar, Iglimar, Elena
de, be, ambo. Demarse mosdibe aggwa bisggi, uamar, basggwamar gindagged.



Masmalad burwi uarbo diwargi obnanaidmar modabmala ulugwa dii diobbigwad
sigse Eyarega. Degi dagsagua Elena binsanai gudsuli, binnasur godde:



**“- Mer deggii imagmala! i Bemar immar
oburgwemalo we dii! Anmar onogergebe!**

Masmalad burwi, indas imaslama immar sae, saed iddosmala gi sogdemarsundo:

**-joo, i doggus bunagwa! i ar sogmarsursi
we bunolo wissur sunmagye?**

Elena dobegi bina, agdede immar gusadse, na binsade warguen gi onoega. we
ulugwa dii diobbigwad saed isgusad gi, geb masmalad igi sunmagmaladgi ar e non
gi gwi urmaggeyobi iddoge.

Binsae: Ulugwa dii diobbigwad isgusad abisuli onoer, bergwable immar isgana
durgan gi bela onomalo. We diwar anmar bendagge, anmar ar anmar burba nued
se, iggi anmar ga sabga odurdage sunmagge.

Ar degi, buggidar diwar negweburgi
nanamaid, diwar baidbo yolenoni
dae Ar baid mar bo yoledae". Na
iddoge e nono sun goddele degi
aminai quali e ebendagmalad.



Dador Chongo se addagnade, ar dule maddugwagwa, e sagla siggaled nia gurgin yobi. Gadi emarga soqe, wegui be sao, ar egaya burba di, Mala urmagge yobi gole. Degsogu Elena binsasa, we dule sun anga nudasar dagge igar gumaid. Ar we bergwabble immar samaloye goddoe de. Degine Dador Chongo abin imagde: **¿Ani? ¡Andi Suli!**
Ega sogde e gaya godde Mala urmagged yobi: Be dodonae.

Degine Elena, Muu Irma se addagnade, muu irma yeer namagge, binnasur al-legdae. Ar e wagar dibe, e ibya mala, na gusgu alee gudidae. Agala Elena binsasa we gine, anga sun nudasale Daggedba ar bergwable iddomaloe. Degi Muu irma abin imasa: **¿Ani? ¡Andi Suli!**
Ega binnasuli allide, degi ga dagleali, Elena ga mango ossi.

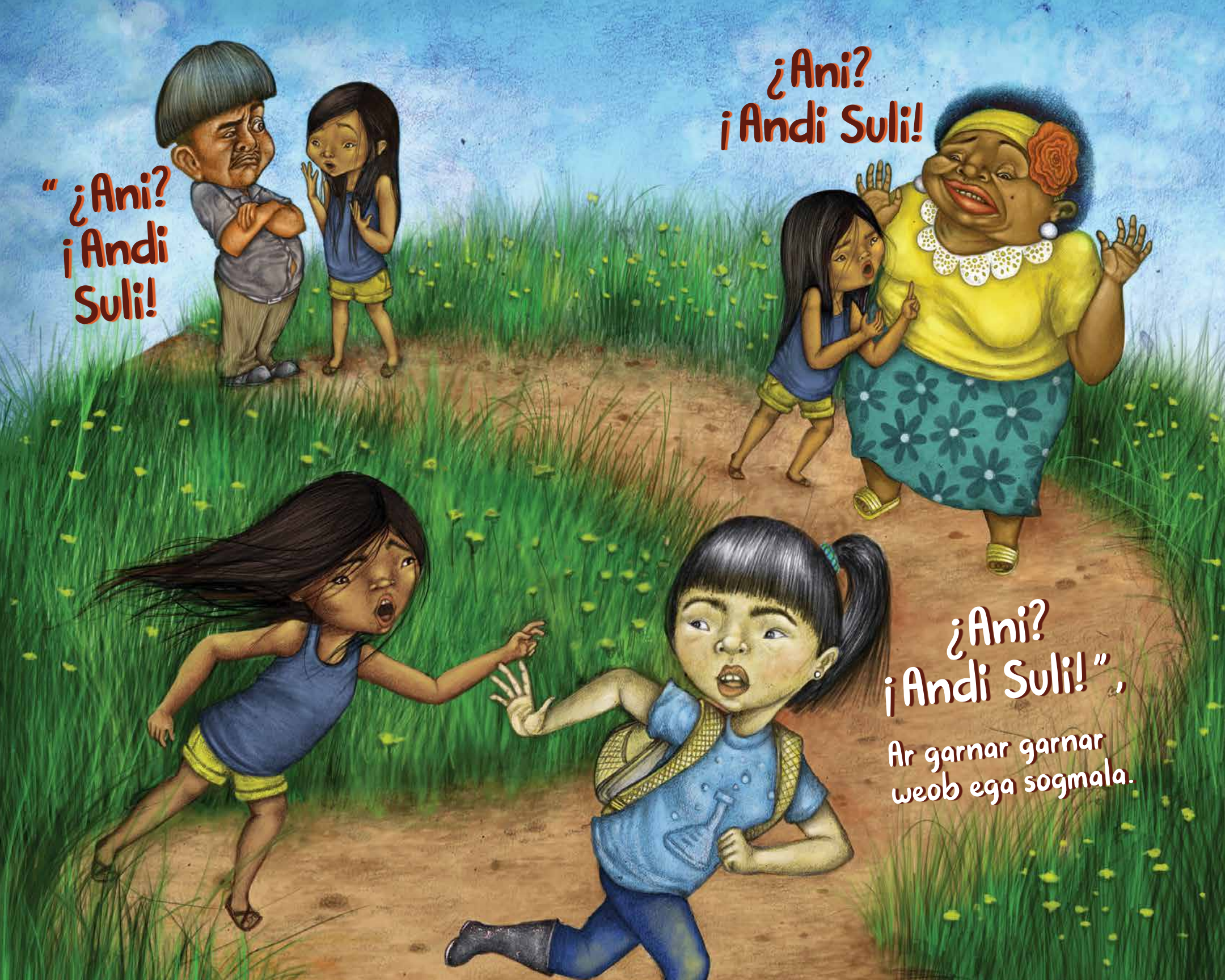
Geb nabbi Elena, Ana se addagnade, sabga durdagged gi walignai, Innigigwad daed Gar ogoled gi, danar danar arbaeggi, gusgu innigwugwad onogegse imagged Elena binsas do we dule sun an bendagsale, igar nudaggega, ar sogedgi arbaed. Diginigwale, Ana abin imadde: **¿Ani? ¡Andi Suli!**
Degi abarmagde, ar gwae e immar obelogege. ¡Ar wissubardo ibua!

“ ¿Ani?
¡Andi
Suli!

¿Ani?
¡Andi Suli!

¿Ani?
¡Andi Suli!”

Ar garnar garnar
weob ega sogmala.



Degi Elena, bugginbinsaedba, diwar gaggaba
megisa, Iglimar dagmai, duggin egissde: "¿An ibu Imaggoe?"

Degi uggiale gagan mar agnide, sabbimar
sugude, moggir mar bangude.

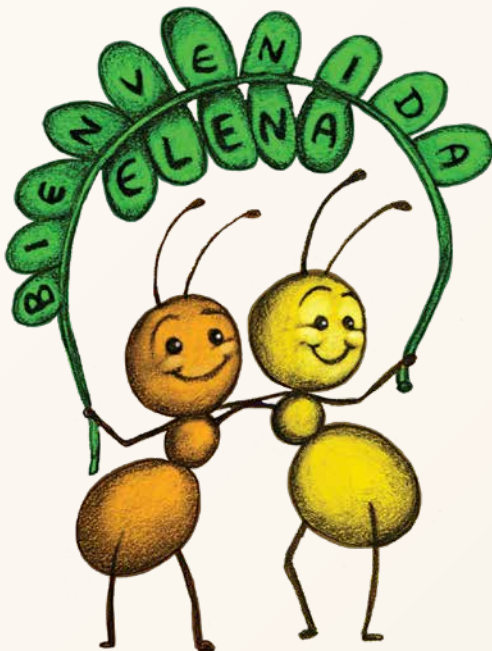
Elena bibbigwa, Iggly
dungueyobi nade.


Elena pio sogged iduar, immar iddoge:

Na degide; Elena. An nuga Rosita. Nuegambi,
Iglimar negweburse be noniggid.-

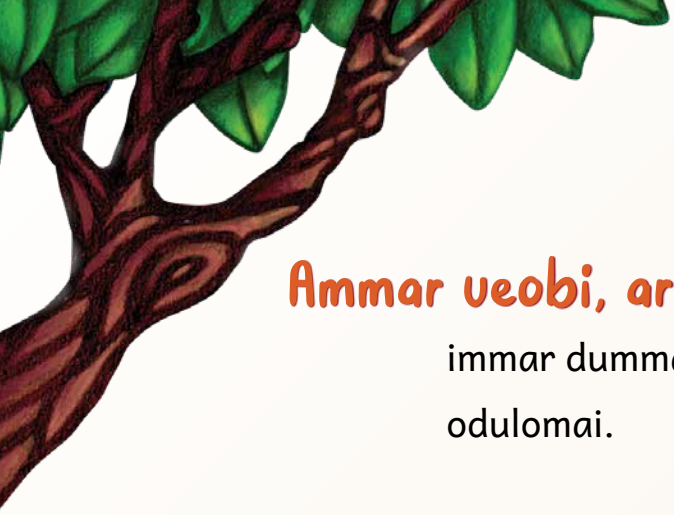
Gegedagge. Rosita ibya gi nue dagge,
sunsogeddi inso be Iggly.

Elena nabir Nuedgi Iglimar negweburse
nonniggi. Yar dummad birgi nagmamaidi, iggly
uu dogedse Elena egisde:





- ¿Ar bemmar
burwigwamala,
degidde ú igi
dummadi bemar
sobsa?



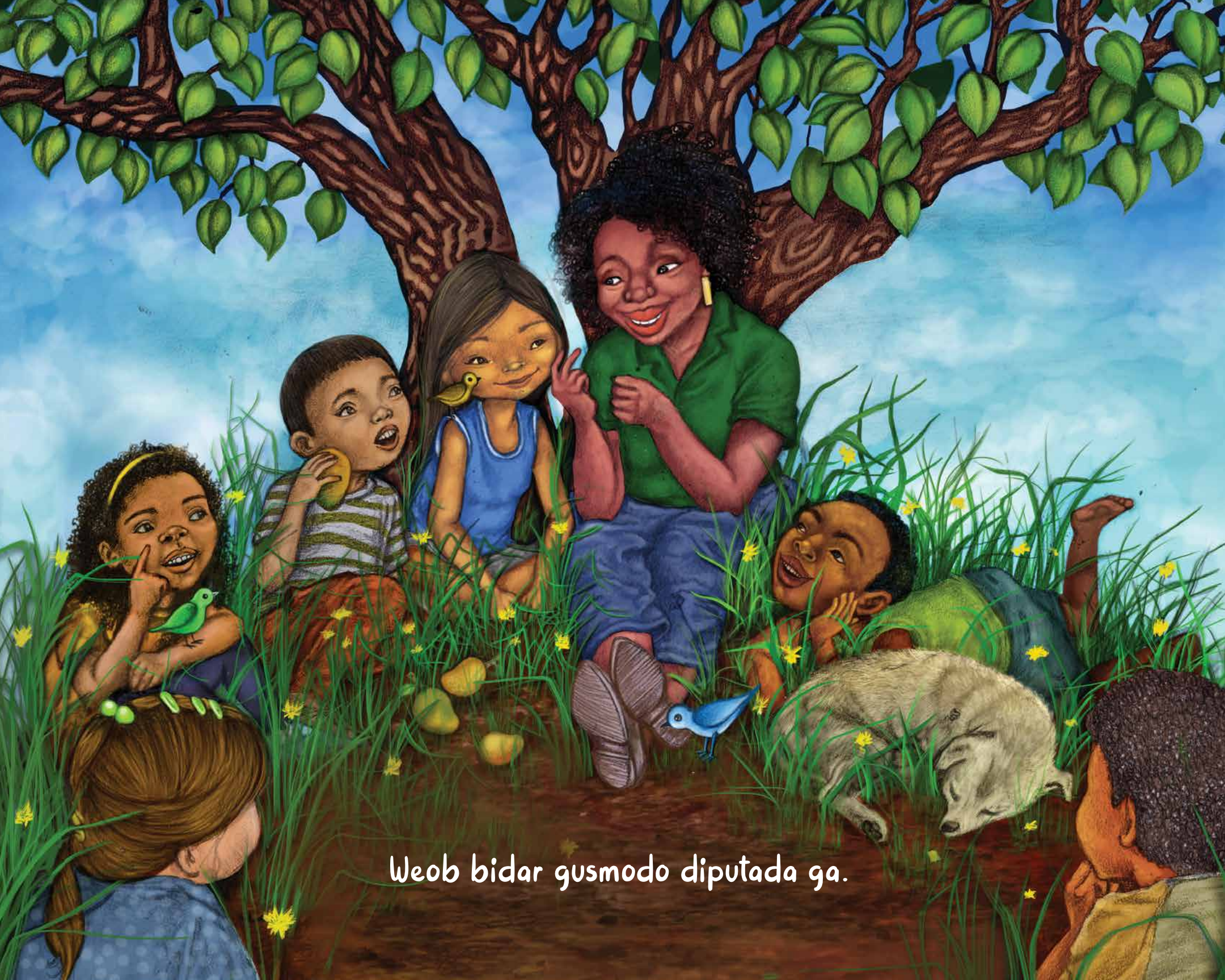
Ammar ueobi, ar aggarsuli, ammar wisi Binna binna , bulagwale sun immar dummad oyolege, Deginigwale ammar buggidara, Rosita ega odulomai.

Elena ise daggar iggly margi, e burba ganguedba arbananai ar nued imagmai, na ese gornanai, na argan oyonanai, na mussub, mussub Bendagge, uargwen saed sadde ese goled. Bulagwale na e arbaed wisi na e neggwebur. Degi Rosita dina oyonaigusdo eneg dagleged, Elena dagde inso magari iddosa. Degi bela ega bibbirmagsagu, ega iba onosmala Iglimar ega namagdemala, bela gwable dodomala. Elena binnis nade edungued gannar se.

A iba gi diputada Laura Rios Digir neggweburse addagnoniggi

e aimar daggega, eneg diggarba mamaid, ar dadgan dagsamalad e dungualid, sabbimar e burbamar, geb bansus ú mar. Elena yobbira danguargusmoga, e dina nono nued nigmogga. E gwenarganmardi nue na bendagsa nue sabga odurdaglesa, degi nabir nega dummagamba dogde, políticas marba. We neagbbali immar nuegoambi sulemai ammar dule neggwebur gued gi.





Weob bidar gusmodo diputada ga.

Elena dagsagu, geb ebo sunmagde, boni nigadgi, ulugwa dii diobbiguad saed isgusad diwargi nabir iddosegu, ga sogde sabga dummagan maid nudagger gebe, sabbur dummagan naidgi sunmaggergebe, deggirdi ganar an bese nonibalo.

Oibosgu, waggurdaryala, Elena binged osulosa, nade sabga odurdagged negse, Weligwale segedgine, nugar assa yobi. Mosgu esordaganse gogsa igar iddogega, we igar iddolegoedi ammar dula mer gindaglegega.

E sordamar nonigu, Elena dii isggana ega ugsa.

i WAKALA! **We an gobsadibe, an burgoed.**

Bergwabba sogdemardo e wagar sumbadse:



Ammar emisggwa we imagsulile, uggiale ammae we gobdi gudoe, Elena soge. Bela ese addagde Egisnanae yobi. Elena ega nueggwa sogde Igar isgunaidba, diwar isgunaiba. Degi Masmala, bunamaladi, igar dummad dage, Igwa wala sabbi dummad yobi egi binsamala.

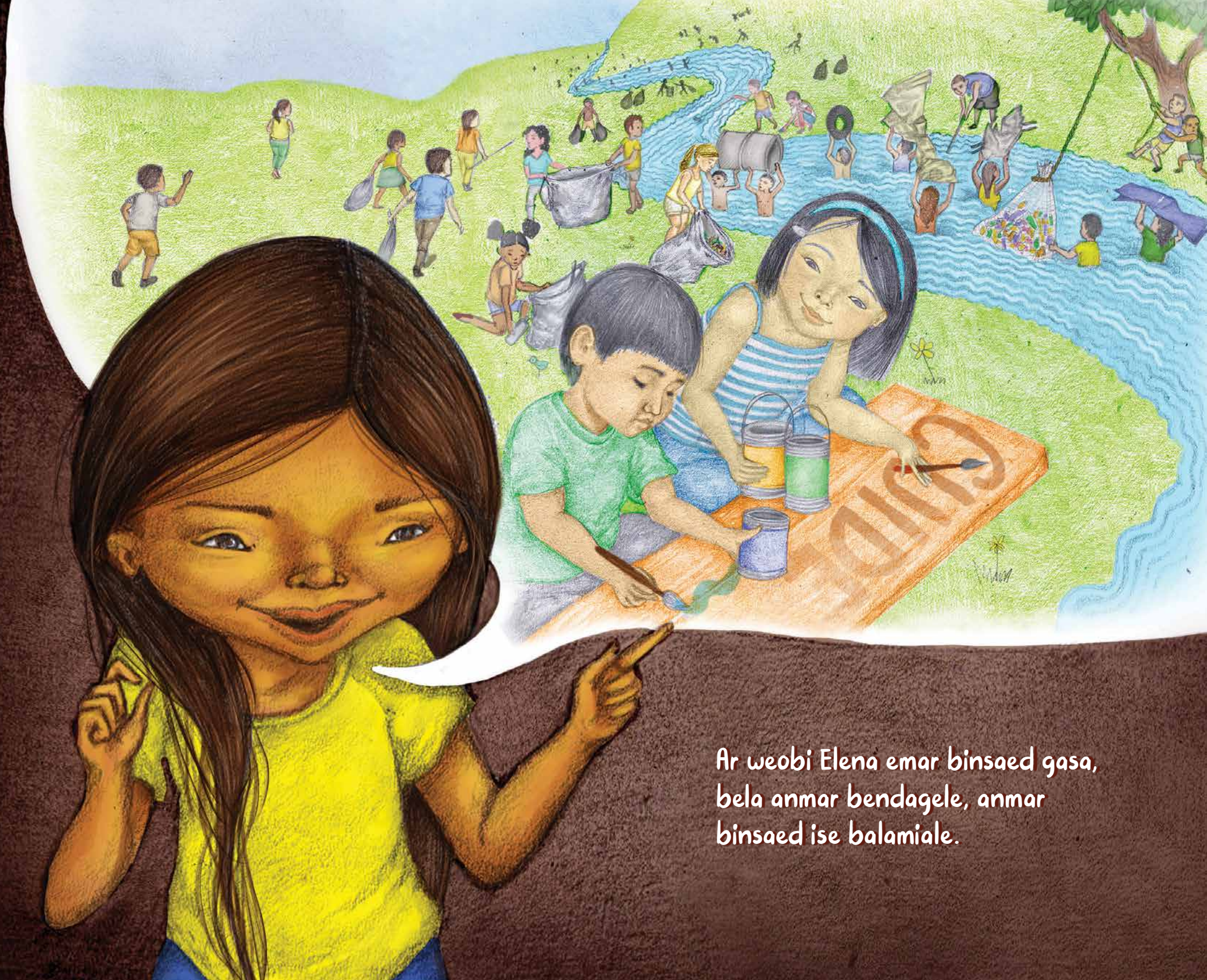


“Serganmala bur nuedgi imaggoe”, Tito godde, degine asa goledgine
yog nar, ged bergwabba eba nadmala.

Ar Elena nue wisi, magasar dagde esordagan immar
wisidaed, ega sogde:

**Iddomalo, dagmala, addagmala, wilubballi immar
binna binna, sunna igar nuedse, buggidar amilesale**

Belagwable, Bulagwale diwar ammar abege, an
bemarga Oyogo: Juana Pedro ebo, nabir burdimalad,
degi soggu Immar durgan isgana diurba bugmalad
onomalo. Mario Josefina ebo, yer binsaed sedimala,
ar we mala anmarga Sogoed igi immar durgan
uggusulid onogoe. Degi Mirna Tito e bo, Sabga
sobmalo yer dagle, sabga dummaggi sogo: Mer
diwargi immar durgan mio. Mer sunnasur sao,
nuegwa durwio.



Ar weobi Elena emar binsaed gasa,
bela anmar bendagele, anmar
binsaed ise balamiale.

Ar weob na binsaed ugdimala, iddogedmosdibe,
Bela diwar nudag nanae.

**Ar iggly mar yobi na uargwenadgine arbananai
Ar bendagmarbali gwenadgan wis abelegele.**

Arbananai, dodonanabali, uargwenadgi an iddomala an
sunsogedi. Yer iddonamarsoggu sergan eba dogde, eba addode,
mergude. Dador Chongo e gaya goledi mala urmagged yobi gor
soggua, neggweburse, godde dagmarye. Muu Irma di obunoeggi,
namagge neg gusmaladgi, sunmagge emar oal-le dabali.

**Ana di binsade immar durgan ilemaggaled saega,
degi ulugwa isgusad Dii diobbi saed, ogwasa
ibnuega, ar ulugwa sabbi egwagmar sabgue.**

Arbaed nasgude bela bela gangued oyomalaggi: Diwar Digir
degi bendalesa. Elena ga sogde, be dii bendagedi, ammar
burba Bendagebali. Digir neggweburgimalad immar dummagan
oyodmala, ar Elena Iggly neggweburse dagsa nuggi.

DIGIR NEGGWEBUR BENDAGMALA (ONUDAGMALA)



IBMAR OBINOGE



Diputada Rios, sogedgi oyosa, gannar noniggi Yer
iddoge Elena dagdegu, e neggweburbo belagwale
Na addosmala, igar nuedse immar gwen gued
daglesulid onosa.

Ueobi gusa, diputada Elena ga sogde andagmogo Asamblea Nacional se be nao daggega,

Bia ar arbasi, igar dummagan sobedgi Neggwebur
bendaggedgi, Digir neggwebur nudaggedgi.

Iddomala?

Iglimar onagnamala e malimala, issed gornamala

“ i Ueee!” “ i Ojve!” “ i Ueee!”.

Ar doa sogsa Iglimargala bemar namarmogo.
Ar Elena nuggi nega sedoena inniggigwad.





Egised, egi Ebinsaed:



a. Igi Elena dae? ¿Ibumar wisi sun immagge?

b. Diigir neggweburgi, Elena ibu ogwabie? ¿Ibi amioe?

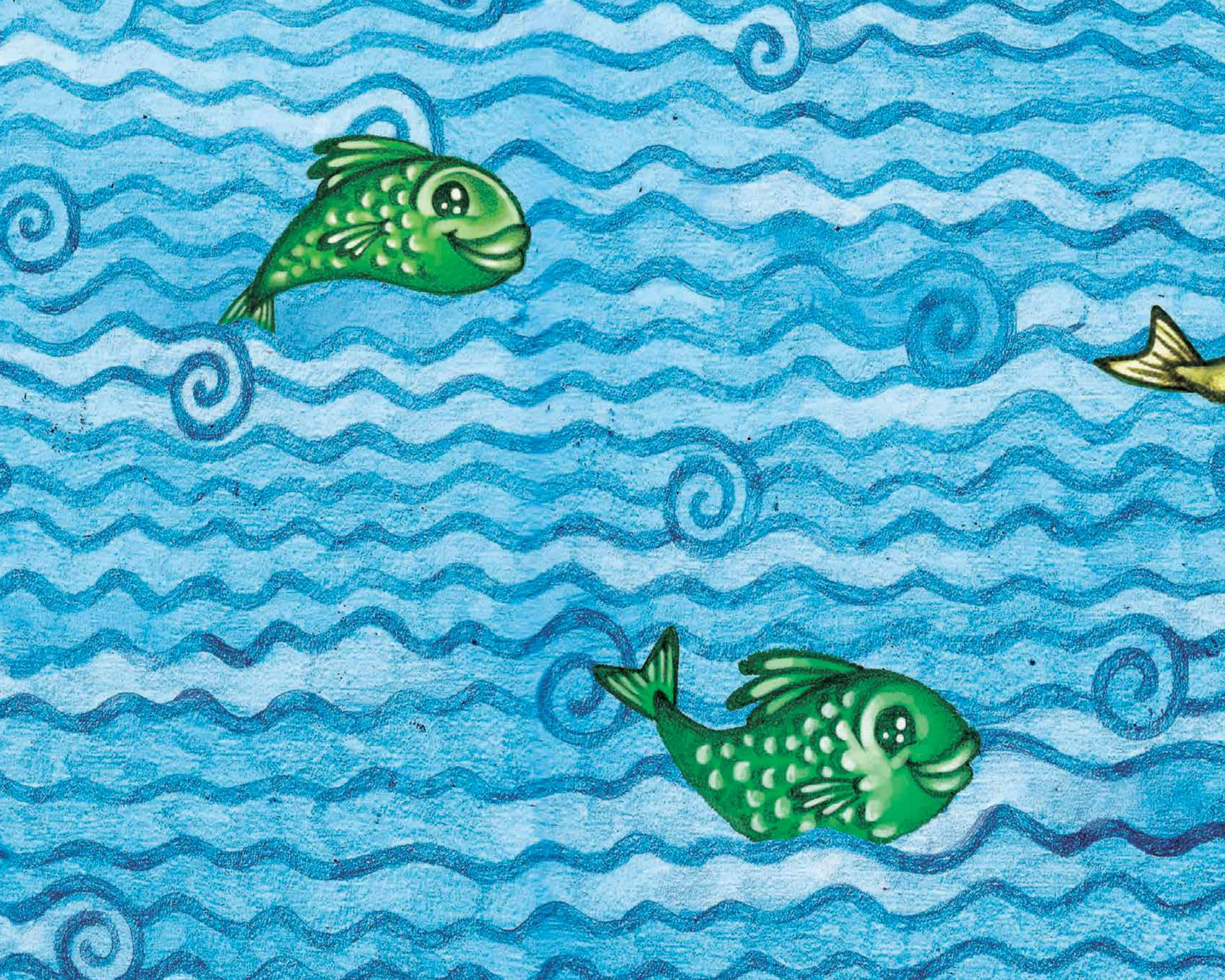
c. Soge wis ibu bur ogganobie be galu odurdagged neggi neggweburgindibe geb igar be duddurmagge baramiega. ¿Doase bendagged egissale?


d. Ibu immar nabir imagmalad Elena dagsa e sordamargi?
Ibu immar nabir imagged be nigga?











Omegan Galu Bulaled na sordagan danar sedimaladi panamagi we sogedi na omegan igar ilemaggagwar nuedgi bugmalad gwable sogedi na sordagan sedimaladi. Na e ulubgi iddogedba addodmala, bur merba na omegan bendaggegala, ar sunna be nangan soge, be muugana, be ammormala, be siamar, be ior-urba, geb be ayamala, nabir gormagdi nanamoga na sordagan danar sedimaladba na neggweburbali. Na gar gangued oyomarmogale sunna nabir sulemoga soglege anmar neggwebur e sagla neg seedga, galu igar saglana amiedga, galu burwigana seed, neggwebur dagmarmogad, geb obiarmalad binsaed dagmalad bela gweburmargi.



Fonamupp Panama



@fonamupp



+507 6370-0982

info@fonamupp.org • comunicaciones@fonamupp.org

www.fonamupp.org

FORO NACIONAL DE
M U J E R E S
DE PARTIDOS POLÍTICOS

