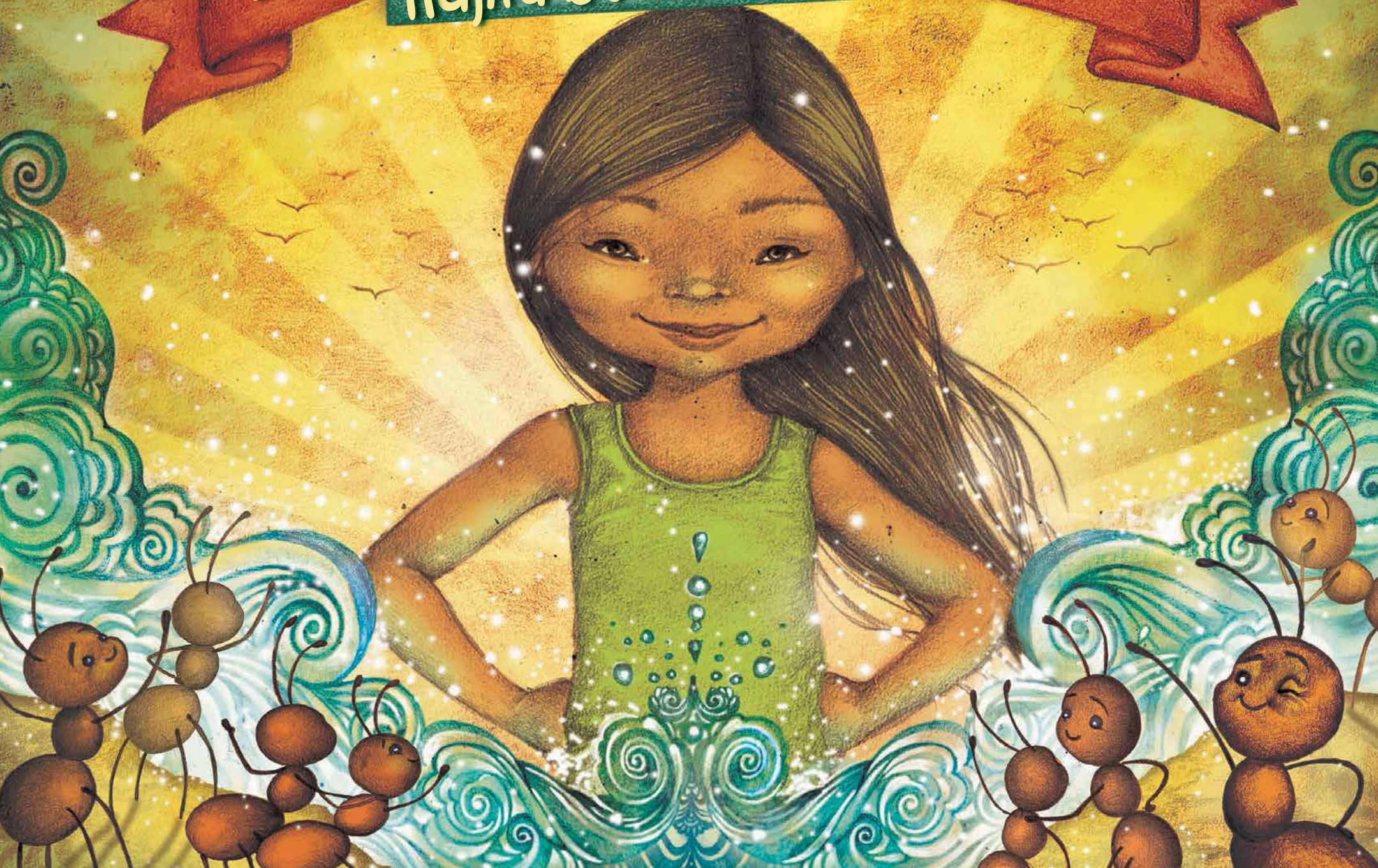


Elenada kabududa rāmē: Ādjira buradra edadia







©Wērārā Dji Jūrebada Kirā Tāntoa Numūa Abari Druade Fonamupp 2020

ISBN: 978-9962-5546-1-5

Dji oda: Lil Harriera

Kaba akubibari: Martanoemí Noriega

Krindja oda: Lorena Carrasco

Bia onumenarā: octubre 2020

Arikopananada: nāngu nēburua opedadade bia duanezia dji odame Leyrāba jarabu kirāka dewuara bedea jipa numeanazida, māuba edakarabua, jida bidaēã, nāngu nēnburua jūma poya djarāba jarada karabua, bariduaba odaēã, narā bedeadia dji barirāme Wērārā Dji Jurebada Abari druade krīdja kīrā tāntoa nūmune.

Nāngura ozidada jaradibera bedea jūnapeda **Canada druaba** idjabari **ParlAmericamanaba**.

Bia jaraida bua nama jūmā numanarā

Wuērāzakerā idjabari wuarrazakerā nama āndji
krīndjada diapedadara, nēbuda idjabari dji kaimokarada
nāngu nēburuara biya kerazia:

Amanda Sofía

Blasco Andrés

Alejandro

Claudia Sofía

Guadalupe

Isabella

Judy

Justin

Rodrigo

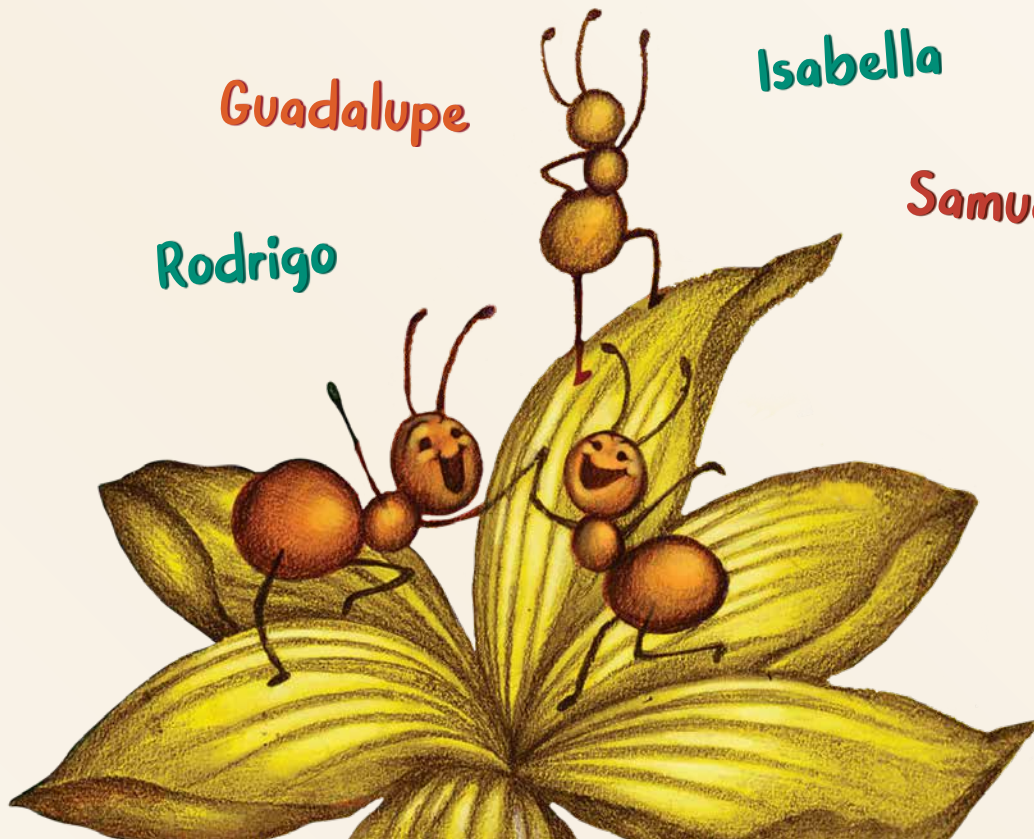
Samuel

Saolys

Valery

Sonia

¡BIA BUA!





Werãrã dji jũrẽbada
Krindjada kirã tãntoa
mama nũmua

Elenada kabududa rā mē:
Ādjira buradn edadia



Dji oda: Lil hArriera

Kaba akubibari: Martanoemí Noriega



Elenarā dau Pidjia kirua māā minā jūma akūbuda.

Antāa akūbua, edaa akuburude adidji djida kobuda unuzida
idjaba bokorroda unuzia. Akūbua nokodea, jëndabida
akūbua, ěmberārāzida akūbua. Idjaba bakuru akūbude dozida
trΛanumuda ũribaria idjido trΛānbizida. Wichiwichicha,
māngude jūmāā akūbaria kabudΛduzida: zawūā trajabadada,
nēnburΛdada idjaba adjirānā karebapānūda. Edaude edebarida
kuāda ādjitea idjabari jarabaria ěmberārā tΛgarānāmarēā.

Dārēā pānūā, Elenarā jamabemarā drua aña wuāpedadara
Comarcadaa Ngabe-Bugledaa, dji puru Jarabadaa, Imama Puru.
Peradja bua Wuadibida nēnbua idji djaramē nēnburudira.
Nawuenarā bedebaria ĩnbanamē, bakurumē idjabari
kabudΛdumē bedebaria. Dji zezara dji papame trajaburu
panabadaa biara babaria dji papa djoramē bia jarabariberā:

-Ejūārā nēkabara diabariberā. Krindjada
bia izabe. Edabaria, Jūma akūbaria,
mukirāka.



Wūārāda, jāwūā bua Elenarā.

Kebara ewuari bianūmēinē, idjira kabūdΛdu akūbude ewuarira wuābaria doikaba akūbude. Nāūrārā puanūmunē trajababaria, nēponorā baira nūmebaria, kekerrerāda bedea pānuā. Kabaēne, **¡BAIZIDADA!** Elenarā daupera buruba idji epaletada kuburΛde jūēburuka kindjazia, djirānboroda kidadrΛda juēburu kazia idjaba zode odjirude.

**¡ PRÁCATA
PACATA
PUM!**

¿Kārēda jawua nūmū? ¿bada baizika? ¿ba unbea bazika?
¿deuremiaka? Bokorroba abeda kabaēbazia itera ña numezia. Īnbanarārā dau perabudaba wuānbarikuazia.
¿Wuayakuza Jēndaa zedaba deburu druade penēñinē?
KabudΛdurā, baridua purrua panābarimāa, māngudeburu piki panezidada.

Baēda jāwua bua, ūnbea baēā, idjaba deuremiaēā māndeba pira puazia. **¡Mānne akūbudade kūrāzada jawua bazia!**
Baidora kirūnumuba juepua wuezia mongaradea jama be bezia.



A vibrant illustration depicting a scene of an accident in a natural setting. In the foreground, a young girl with long dark hair, wearing a blue tank top and brown shorts, sits on a grassy bank with a shocked expression, her mouth wide open and hands raised. Beside her, a large green frog with dark spots also has its mouth wide open, as if croaking or shouting. In the background, a stream flows over rocks, and a yellow car is overturned in the water, partially submerged. The water is depicted with swirling patterns, suggesting a turbulent crash. The scene is framed by lush green foliage and trees, creating a sense of a secluded, natural environment.

Idjira kurāza bibariminā ūnbi
aduabua Idjaba nokodebema ēā...
**i Ārībeada jāwūā
tabea!**

Ĕmberārāba krīndja panūda dora jaībana kirāka akubapeda nēnbabizida.
Māwuā minā nē ārinarā nēnbakada. Jamā tabepeda jān baidora arīzia,
dodikarēarā biēēbezia: Īnbanakarēā, bakurukarēā, kabudΛdurāzida,
Elenazida, muda idjaba bededa, barāzida.



Wuarrazakerāda ume dueda kuipanazidāā juēzidaa korāzabari arīna
māa jumā ėnta kuadi karēā. akubΛrude, Elenaba krindjaē biazia:



**- jōrānada! j baidora
arībudada! Drua jiradada!**

Wuarrarāba idubuzidaa āndjia okirīā pananārā ara mānda poya odaēbera kīrū
wuānāpeda bedea wuānzidaa: - j Joo, j jumāya jarazia!

¿idjira bedekada jāwuā bazia?

Elenarā edaa piānka wuāzia idjiduba krīndja bazia drua jiraida. Kōrāzabari beudada
idjaba jarazidaa wuarrarāba āndji borode Purruuga wuābari buzibazia zānkudΛ kirāka.

Krīndjada: “jāngu kūrāzabarira ara jawuā tabeada, jumā arībeara āī bata bueidabua.
Dora wuagaidabua dadji djānba diabariberā māwuā jarabarida dji nē kababu werāba.

Bariburu dora wuānbua baridua druade
idjaba dji unūbadada dewuaru domē.
Deburu dome, debura dome” idji
boroda puaba jēngai kirāka
numē baribērā idjia jurazia
idji karebadida.



Idjia chongora akude wuābaria mǎāri kiruda buda tudada aukāra erobua nǎēna

bema kirāka unubibaria mǎn boro tudara. Idjia jarabaria bedeadā kirāka. Mǎn

karēaburu Elenaba ījānbuda māngu ěmbērābā jarabura kaba obaribērā. Idjia

jarabua jūmarāa zawuāburu odida. Bariburu chongoba panōrabaria: - **¿MŪ? ¡MŪēā!**

- idji bedeara jarabuda ba kirākā: - wuāda jēmēnē borokokoabume-.

Ara māngude Elenaba djora Irmara akude wuābaria,

jāngu djoraba trūābira biya bubērā, idjaba ipidabibaria baido bea jirabu kirāka.

Mǎn karēāburu Elenaba krindja barida idjiaburu māngura biya oida Jumārāda

burzida duanazida karebadibērā. JānguburΛ Irmaba panuzia: - **¿MŪ? ¡MŪēā!**

- Idjia diazia, dadji kirāndarra bira ipidazia, kūābazia.

Jūmā biya beda kārēā, Elenaba Anada akude wuānbazia,


idjira wuaita beara bubērā jumārā kañabara. Idjira nē okaba bua jari trΛbi

zabada kirāka dji jurenūmunē jumārāmē idjia jarabarida biaduananida.

Elenaba krīndjabuda idjiaburu juma kaba oida, idjira krindjada bia erobua

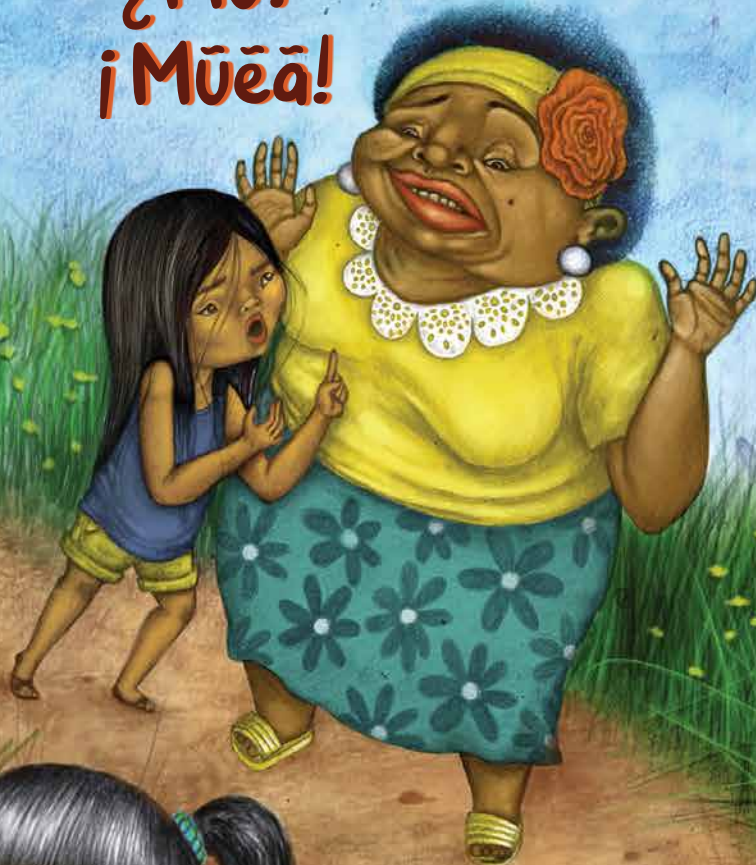
māuba biaberida jūmārāme. Bariburu Anaba Panōbaria: - **¿MŪ? ¡MŪēā!**

- Mǎnne Pirawūābarida jūmāña kaidu bedaberā... ¡aduabubērā karēā iteada!



“¿Mū?
¡Mūēā!

An illustration of a man with a bowl-cut hairstyle and a mustache, wearing a grey shirt and brown pants, standing with his arms crossed. Next to him is a young girl with long black hair, wearing a blue tank top and yellow shorts, looking at him with a surprised expression.



¿Mū?
¡Mūēā!

An illustration of a woman with a large orange flower in her hair, wearing a yellow top and a blue floral skirt, with her hands raised in a surprised gesture. A young girl with long black hair, wearing a blue tank top and yellow shorts, is running towards her with a surprised expression.



¿Mū?
¡Mūēā!”

An illustration of two young girls running along a dirt path. The girl on the left has long black hair and is wearing a blue tank top and yellow shorts, running with a surprised expression. The girl on the right has a ponytail and is wearing a blue shirt and blue pants, also running with a surprised expression.

Elenaba ūribebarida
ara kadrua dji
bedeadada.

Ně kirĩaěě Do Orrojãka tabezia idjaba kabudΛdurãba
akubuda, idji duba ibidibarãa, "¿muã zawuaburu oidabu?"

Kabaēne, puajãrãra wuaribua, bakuruda
drazoa wuabaria, bajãzida tũma wuãnbarizia.

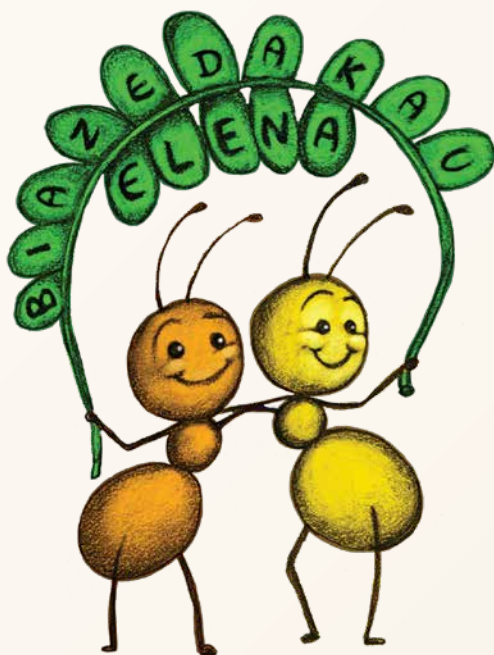
Elenarã mããrĩ
bua... kabudΛdu
Kirãka-


Elenaba jarai naēna pio azida, mawuãburu uribua:

- Měřã, Elena! Mura trΛn jarabadaa Rosita. Bia zeda
kau mũ druara kabudΛdu dēa-

ĩñjãĩ karabuba! Akunũmũda jipaa Rosita dauda,
kabudΛdu dji arada.

kabudΛdu druade bemarãba jarapanũda Elenarã zeida
drua kabade bedea bia jarada berã idji babarimãã.
Mãn misaa Λntãa eyadaa wuãnbudade ãndji
Odjabadamãã, Elenaba ibidizia:





- ¿Zawua ozidada
Māāri kedeaba nān
Dera juma wuaña
wuaibuanūmūrā?



-Mawuā panuminā māngura akudiē panua, dadjirāba kaba panūa māārī kedeada, bariburΛ jūmā dji jurenūmūnē poyadida panua māngu wuaibua nūmūrā, māngudera, dadjirārā zokarā numua -Rositaba māwuā jarabua.

Elenaba akubua kabudΛduda zawuāburu obu kabaya idjia mǎn krindjade biara oibērā; ādjirā uria eda duanunē bio bedeabadada, abarika juwuara diapanua, āndji duba karebadruanumabaria mawuā nūmumīnā nēā ādji edara mawuā biēe odira. Jumārāba māngu kabudΛdu druara akudida panua. Mǎn misa Rositaba akūbibua kabudΛdurāda, Elenaba biara unūbua. Māmabe juēnbua idji nibadamāā kabudΛdurāba ozidada āndji trΛābira jumārāda bairadamarēā. Baira panuda, Baira panunē, Elenarā jēnda zeburude idji bada kirāka wuayakuza bezia.

Abari ewuāride diputada Laura Rioba akude wuānbazia Imama Puruda.

idji ēmberārāda akukuade, Drōārārāda idji kaibe bazide unupedadada, bakuruzida, dji jāureda, ĩnbuzodezida. Māngu druade idjira abarika wuarizidada Elenamē māngude akubabarizida. Dji barīrāba idji karēā trajapanunē idjira nē kababizidada, māngudeba idjira wuānzida bedea wuaibua ode, mamāā eda wuānpeda Bedea jaradroanumeinē ēmberārāda biara kaba odikarēā jumarā itea.





Mawuā bazia, diputada Kirāka juēnārā.

Elenaba kabada karēã, idjime bedea panunē mǎngura unizida nē arĩnumurã dueda. Kareba kĩrĩa dogozida biara idji krindjada nũmuibērã ějuārã ara mǎn kirãka jarazia wuaya kuza zeida.

Nurēma diapeda, Elenaba idji perara ānguya bezia mǎnne wuǎnzia burzida nekabade jaradia badamãã. Aramãa trũnzia idji abarikārãda dji jArezidada,bedeada dadji zokai kedeadebemedada,dji beudazida jaradi karēã.

Juēna pedada karēã, idjia baidoda mititia djumuda juediazia.

**i MINGUIA
CHUMUA!**



i Mǎn baidoda dozidara beudida panũã!

-Jumārãba jarazidada kĩrãndarra biē nupananarã.

-Manda izabe kaba odaērã, ababe eropananiã baido biē djumuda dodikarēã- Elenaba jarabua. Jumārãba idjida akudapeda ibidipanua. Elenaba mǎnda jarabuda duedara biēē numuda, bariburu wuarrazakerã, wuerãzakerã itea idjia jarazia bedeara wuaibua numurã Corotú bakuru nũmu kĩrãka.



“Drōārāburu kaba odia”, Titoba jarabuda wuadí wuāinaēna, Mānnē

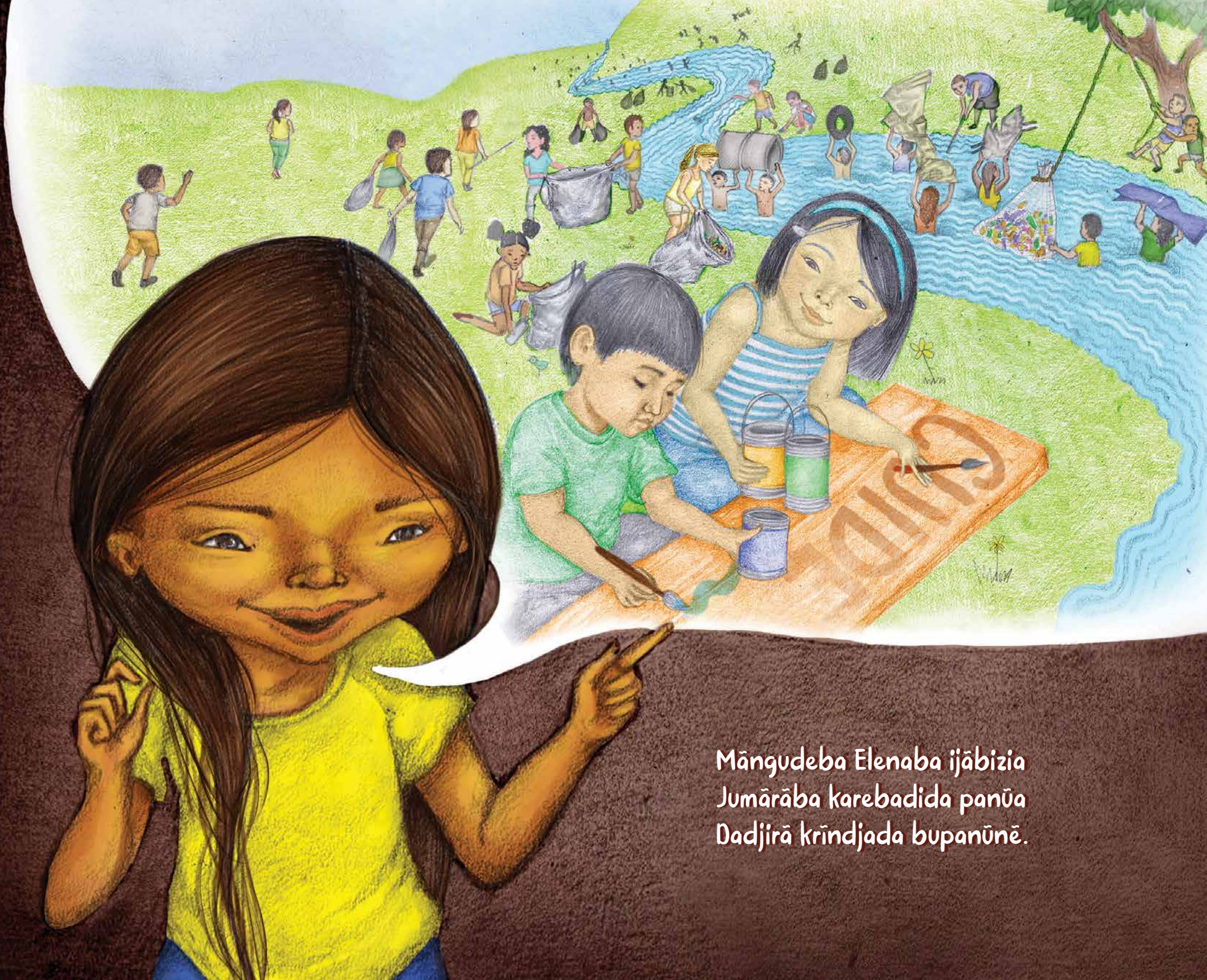
Jumārāda idji kaidu wuānada.

Elenaba akubaribērā kababuda idji ėmberārā zawuāburu
beada, ādjia jarabua:

**-Urīnāda, zedada, akudada, māāri maārine jumarāda
numunē poyadia dadjirāba okirīa panu krindjada.**

Doba dadjirā meburu jarapeda bakīriābua jumarāmē, barāā
jūmā biya akubiya: Pedrora Juanamē dozu kaba panua,
māngude ādjira dueda nē arīnāda tabeara drΛa biara budia.
Marioda Joséfinamē krindjaba nēkaba beabērā, māngudeba
ādjia nē arīnārā zAguabeada aña buekuadia. Māngudeba,
mirnada titome, biya nē bukaba panuda. Ādjia kaba budida
kabadamareā nē arīnada ėmberārāba duedaa batarānamarēā.
Mititia odaēburu idjaba biya imanumaida buda.





Māngudeba Elenaba ijābizia
Jumārāba karebadida panūa
Dadjirā krīndjada bupanūnē.

Māwuãburu, ãndjirãrã mãngu bedea jarapanũnẽ
ewuarira wãbipanuã dora biya ãma amedada.

**Abarika kabudΛdurãmẽ, dadjia kaba kaba eropanũda nẽ
odira idjaba karebadida panũbẽrã dewuarãrã zida.**

Djirua bupanãnapeda, burzida droanũnẽ bia bea baria.
Māwuã bia droãnunẽ drõarãda auduara wuãnzidaa.
Drõã chongoba idji bedea bã kabuba idjia jarabaria idji kaita
panãbadaa. Djora irmaba mãmaã akukirude, trΛãnbua
dadjirã naẽna bema kirãka jũmarãda ipidabibaria.

**Anaba idjida jarabaria mãn nẽ arĩnarã añbaa buedida ara
mãΛneba korãzabãri arĩnarã nẽ udikarẽãburu biya eropenezidada.**

Mãngudeba wuaribua dadji nẽudara jumãrãba bupanũbẽrã:
“Imama dora ara idjibada kirãka beida”. Elenaba ãndjia
kĩrãnẽ babibaria baidora idjia jarabuda wuagadida djãnbada
diabaribẽrã. Imama purude ãmberãrãba, jarapanũda Elena
kakua bari edazidada krĩndja biada jumãrã itea. Idjaba
kabudΛdurã kakuabari.

IMAMA DORA ARA IDJI BADA KIRĀKA BEIDA



NĒ ARĪNĀBA ODIA



Diputada Rioba idjia bedea jarabadara wuãrã bazida mãngu
druadea wuayakuza akude zeira idjira burzida bazida
Elenaba parura ãmba jure erobabaribẽrã, mawuãburu idjia
edazia kĩriãbadara, mãnne idjia poyaẽda krĩndja bazia.

Mawuã bazia diputadaba Elenarã edopeda edezia Assembleia kababide.

Idji djirua bubabarimãã mamãbAru bedeara kaba obadaberã
Imama purura biara jirũ nibẽrã.

¿Arĩpanuka?

KabudA durãda dji jirũ zakera Antu jiradapeda bia numẽãzia:

“ i jvuy!” “ i jvuy!” “ i oii!”.

Bariburu ¿kaiba jarazi kabudA durãzida wuãnida?
Elena badabara ãndjizida edekazidaa. Mawua bakazia.





iBididia:

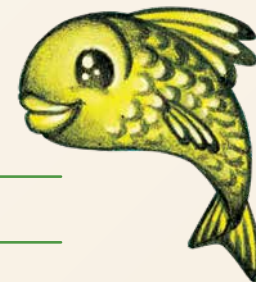


1. Aba. ¿Elenarā zawuā bu? ¿Karēda bia obari idji karēā?

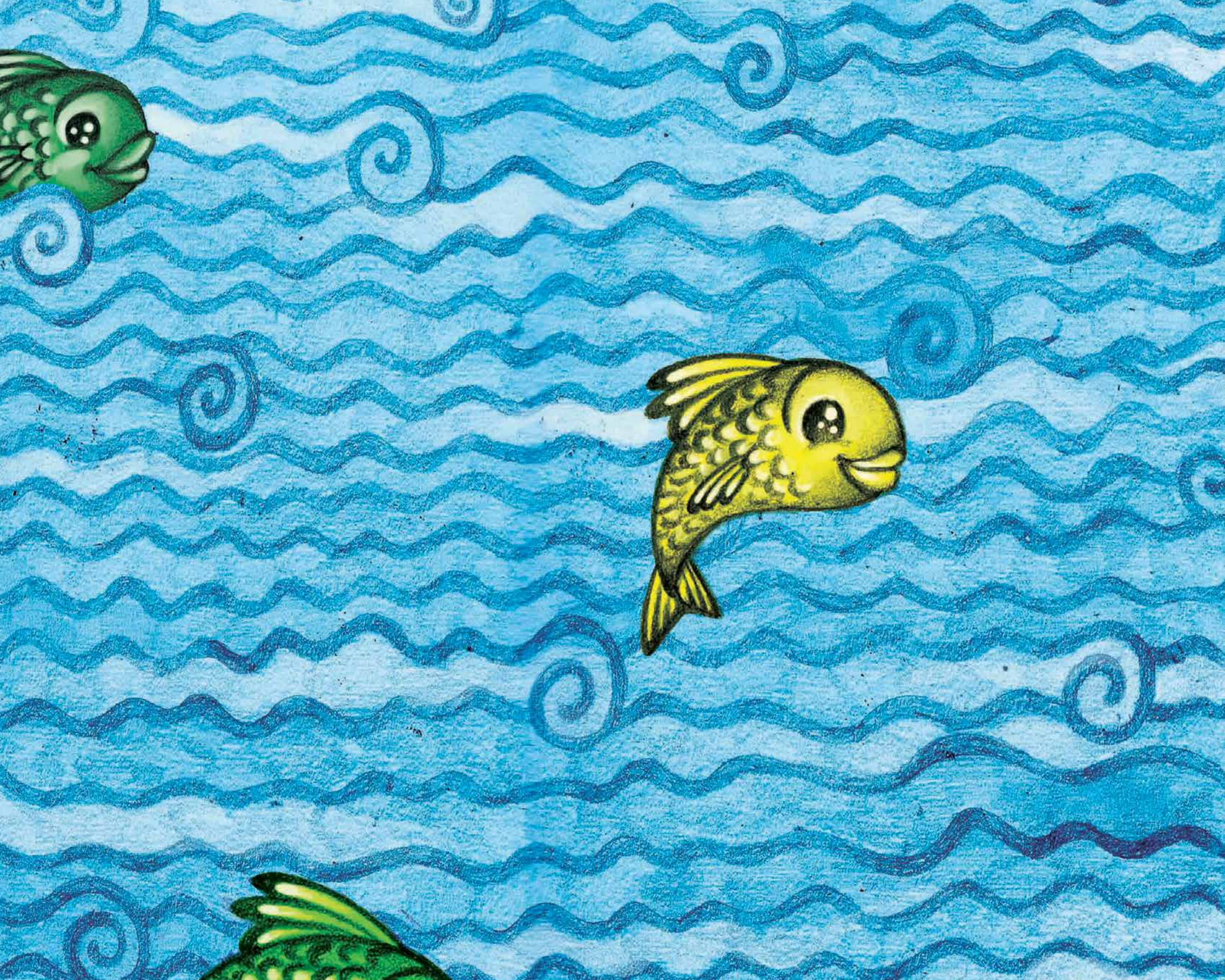
2. ūme. ¿Karēda Elenaba jaradiabu imama puru kirā awuara oira?
¿zawua poyabl? _____

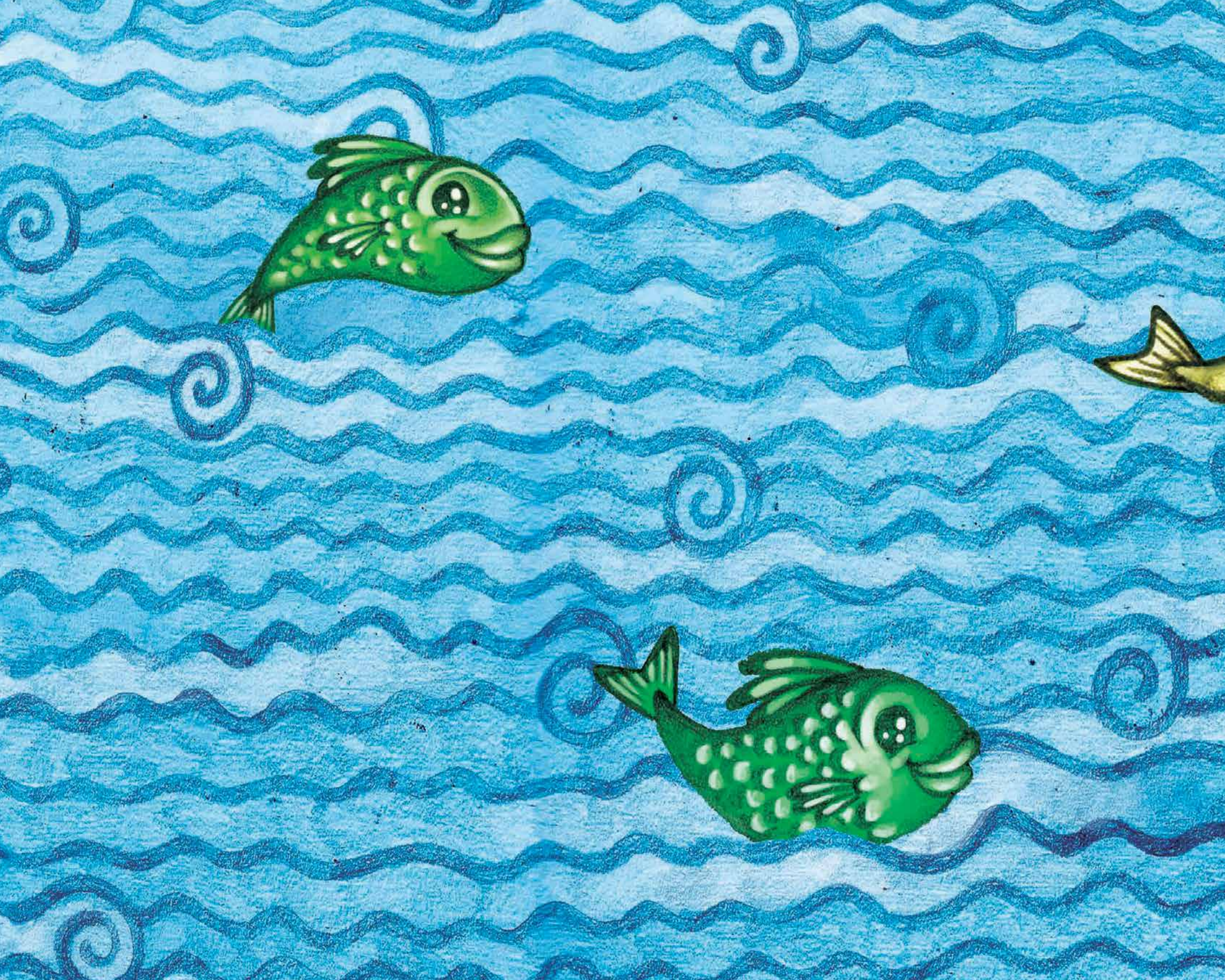
3. Ūnbea. Trūn jarada karēda kirā awuara oidabu druadera idjaba bΛ
nēkabada jaradiabarimāā, ara māngu odade bΛ krindjada edaira.
¿kairāa bua ibidiidabu? _____


4. Kīmarī. ¿Elenaba karēda unūzi idji abarikārā krīndjade?
¿Karēda erobu bΛ kakuadera? _____













Naārã wērãrã dji jūrëbadamãa krëndja edabadamãã
panamanëbema wërãrãda ãnba duanuã kirã tãntoa krëndjada
mamã barada. Ådji areba jarapanua zawuaburu karebadida wuërãrã
biara krëndjada edadamarëã, åndji papa kirãka, papa djora, ådji apipi, åndji
djabakau, djaba wërã idjaba dji ibia zångume, eda wuãnamarëã jümãrã drua
karëã. Jumãrãba edadapeda idjira badida panua dadjirã boroda babidida panua
nãngu drua karëã, Diputada kirãka, alcaldesa kirãka, Representante kirãka dji boro
wuaibua badapeda nãngu druara kaba jïruniã.

 Fonamupp Panama

  @fonamupp

 +507 6370-0982

info@fonamupp.org • comunicaciones@fonamupp.org

www.fonamupp.org

FORO NACIONAL DE
M U J E R E S
DE PARTIDOS POLÍTICOS

